

# **BUTANE CULINARY TORCH**

Please study the enclosed instructions carefully. You must thoroughly understand how to operate device before affixing the culinary torch to the butane cartridge. Please show these instructions to anyone who may be using this torch. Closely follow and frequently review these instructions to help make a safer working environment.



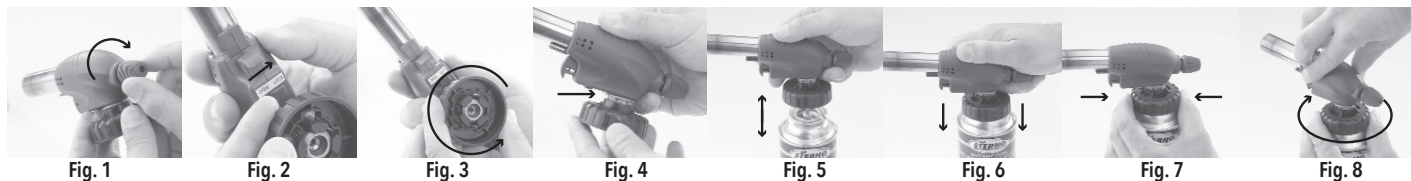
1. Torch Nozzle
2. Gas Control Knob
3. Cartridge Fitting
4. Lock/Unlock Switch
5. Ignition Trigger

## Safety First!

1. Read and understand instructions before use.
2. The torch is equipped with anti-flare technology. In order for this technology to operate properly it is important to preheat the torch for 2 minutes prior to use. Once pre-heated, the torch can be used at any angle without flaring.
3. Use common sense. Never point the torch towards face, body or clothing of any person.
4. Torch Nozzle gets exceptionally hot during use. Do not touch Torch Nozzle during or shortly after use.
5. Never modify or repair the torch. Any repairs or modifications may cause dangerous and unpredictable results.
6. Use torch only in well-ventilated areas.
7. Be aware and extra cautious. Careless use may result in serious injury.
8. This is not a toy. Keep out of reach of children.

## **A** Attaching the Torch to the Butane Cartridge

Always attach the butane canister to the torch with the canister in an upright position. Preferably with the canister's base on a solid surface. Avoid tipping, tilting inverting and/or swinging the torch immediately after ignition. Doing so is dangerous and can cause the flame to perform unpredictably.



1. Turn Gas Control Knob clockwise until it stops. This is the "Off" position. (Fig. 1)
2. Invert torch. Safety Switch on torch should be in "Lock" position. (Fig. 2)
3. While still inverted, turn black Cartridge Fitting counterclockwise. (Fig. 3) You will see exposed threads. (Fig. 4)
4. Place Butane Fuel Cartridge on a flat surface.
5. Align the torch on top of the cartridge. (Fig. 5)
6. Firmly press down, you will hear and feel the torch securely affixing to the top of the butane cartridge. (Fig. 6)
7. With the thumb and index finger, hold black Cartridge Fitting in place. (Fig. 7) Turn the head of the torch clockwise until secure. (Fig. 8)

## **B** Igniting the Torch

- A. Lock/Unlock Switch
- B. Gas Control Knob
- C. Torch Nozzle
- D. Ignition Trigger



1. Ensure that the torch is properly attached to butane cartridge.
2. Before igniting the torch, move the Lock/Unlock Switch (A) to "Open/Unlock" position.
3. Turn the Gas Control Knob (B) counterclockwise 1-1/2 turns.
4. You will hear a strong hissing sound. This is the butane traveling through the Torch Nozzle (C).
5. Squeeze the Ignition Trigger (D) with index finger to ignite the torch.
6. Release Ignition Trigger.
7. To preheat the torch, rotate the gas control knob approximately 1/3 of the way in the direction of the plus (+) symbol to release the gas from canister (you will hear a slight hiss) and pull the ignition trigger for lighting. Once lit, and before adjusting the flame strength, allow the torch to preheat for 2 minutes prior to use. Once preheated, torch can be used at any angle without flaring. Anti-Flare After 2 Minutes of Preheating!
8. You can adjust the flame by turning the Gas Control Knob (B) clockwise "-" or counterclockwise "+".

## **C** Turning Off Torch and Detaching from Cartridge



1. Turn Gas Control Knob (B) clockwise until it stops. This will immediately extinguish the flame.
2. Let the Torch Nozzle (C) completely cool down for several minutes.
3. When the nozzle (C) is cool to the touch, remove torch from butane cartridge:
  - a. With thumb and index finger, hold black Cartridge Fitting in place. (Fig. 9)
  - b. Turn the head of the torch counterclockwise until disengaged. You will see exposed threads. (Fig. 10)
  - c. Firmly pull up to remove torch from cartridge. (Fig. 11)
  - d. Store torch and butane cartridge in a cool, dry place.